



A new concept of LED Batten

2 in 1 Concept

Our innovative technology solution brings one light source, but double the lumen output versus conventional T8/T5 tubes.

It also designed to act as a wire guard fitting. No more worries, save cost. All in one concept.

Energy Efficient. High Return on Investment

We build the luminaire with energy efficiency & high ROI in mind. Therefore, we choose the best lumen efficiency light modules to produce our LED batten.

The end result, it will use less energy to bring the same lumens. This luminaire saves on total cost, brings the best return for you.

Applications:

- Car Park Lighting
- High Bay Application
- Clean Room Lights
- General Lighting

Model:

NX-BT-40W: 40W/4200lm

NX-BT-60W: 60W/6200lm

NX-BT-80W: 80W/8200lm

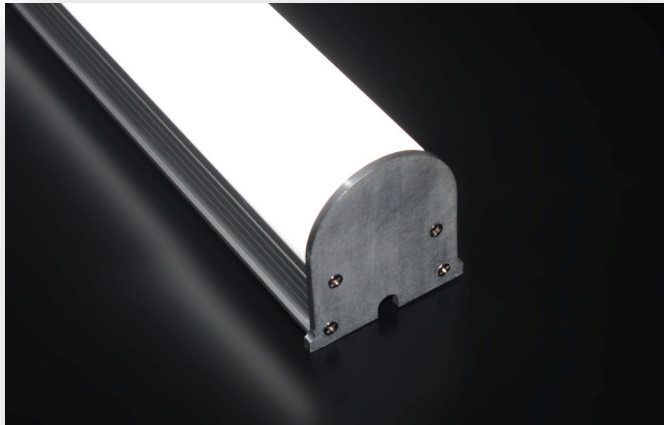
Powered by **PHILIPS**

Thinking of lights the different way. Save more, do more with LEDs.

NOXEL LED. *Light of the future.*

NOXEL[®]
LED LUMINAIRES

WWW.NOXEL.COM



NOXEL LED BATTEN LIGHT

IP40

max
1 KG

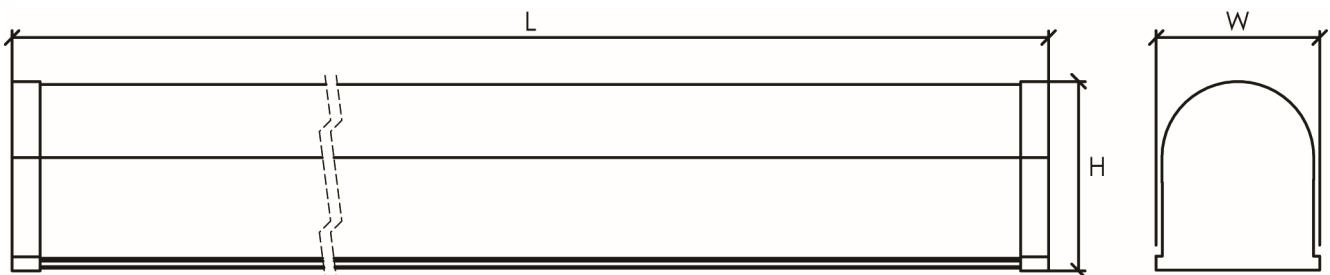
220-240
VAC

-20 °C 50 °C

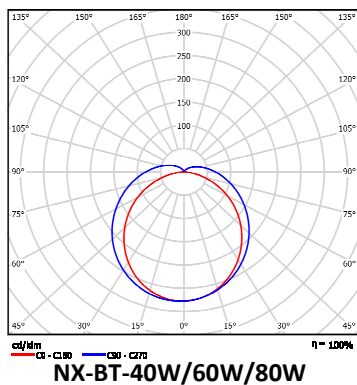
Module Powered by: **PHILIPS**

Standard Specification

Model Code	Wattage	Luminous Flux (3000K/4000K/5000K)	Beam Angle (°)	Height (mm)	Length (mm)	Width (mm)	Weight (g)
NX-BT-40W-01	40W	4000/4100/4200	75°	66.5	1200	60.5	1000
NX-BT-60W-01	60W	6000/6100/6200	75°	66.5	1200	60.5	1000
NX-BT-80W-01	80W	3000/3100/3200	75°	66.5	1200	60.5	1000



Photometric Data



Non Standard Customizable Features

L02— Length 1500mm

L03— Length 600mm

30W— 30W; 3200 lumens

NOXEL[®]
LED LUMINAIRES

WWW.NOXEL.COM